

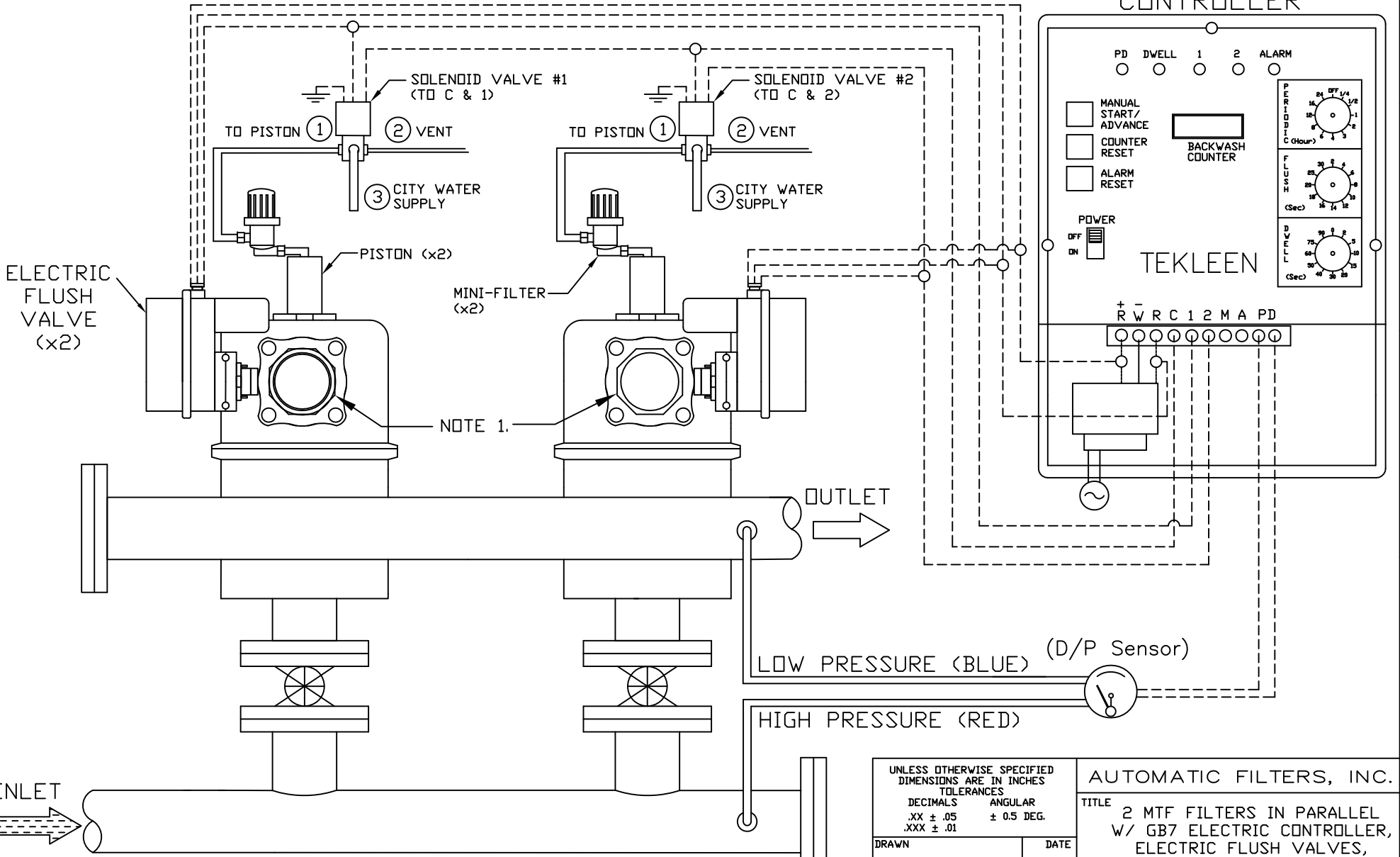
1      2      3      4      5      6      7      8

Valve #1 Connections:  
 Red: R+ (Left)  
 Black: R (Right)  
 White: 1

Valve #2 Connections:  
 Red: R+ (Left)  
 Black: R (Right)  
 White: 2

REVISIONS				
REV	ZONE	DESCRIPTION	DATE	APPROVED
1	3A	ADDED NOTE 1 REGARDING UNION.	06/25/13	S.P.

### GB7 ELECTRIC CONTROLLER



-----	Electrical Connection
=====	Hydraulic Connection
○	Junction
∩	No Junction

NOTES:  
 1. IT IS RECOMMENDED THAT A UNION BE INSTALLED BETWEEN THE FLUSH VALVE AND FLUSH LINE FOR EASE OF MAINTENANCE.

UNLESS OTHERWISE SPECIFIED DIMENSIONS ARE IN INCHES TOLERANCES	
DECIMALS	ANGULAR
.XX ± .05	± 0.5 DEG.
.XXX ± .01	
DRAWN	DATE
S. PERKINSON	08/01/12
CHECKED	
DESIGN FOR:	

AUTOMATIC FILTERS, INC.	
TITLE 2 MTF FILTERS IN PARALLEL W/ GB7 ELECTRIC CONTROLLER, ELECTRIC FLUSH VALVES, PISTONS, & SOLENOID PISTON VENTS	
DWG NO.	REV
WIRE-2MTFGB7-LAY-08	1
NOT TO SCALE	SHEET 1 OF 1